

Inhaltsverzeichnis

6 Working with AutoCAD	3
6.1 Basics	3
6.2 Creating an AotoCAD drawing in Teamcenter	3

6 Working with AutoCAD


6.1 Basics

In this project a simple interface from Teamcenter to AutoCAD was implemented. With this interface, AutoCAD files can be opened from within Teamcenter, edited and the changes saved in Teamcenter. All PDM functions such as search, release etc. are also possible analogous to all other part types (2D/3D design with NX).

6.2 Creating an AotoCAD drawing in Teamcenter

You cannot create an AutoCAD file (or a part with an AutoCAD file) directly from AutoCAD in Teamcenter. There is the following procedure for this:

Create a new part in Teamcenter as usual:

Select „File → New → Item“ and then select the type  FFG Engineering Item .

Assign an item ID and assign a (temporary) name.

Press „Next“.

Neues Element

Objekterstellungsinformationen

i Der Wert sollte einem der folgenden Muster entsprechen (bewegen Sie die Maus, um alle anzuzeigen).

FFG Engineering Item

Allgemein

▼ **Elementinformationen (Erforderlich)**

ID:

Name:*

Falls Sie eine ID aus dem Namenskatalog wählen, wird der oben eingetragene Name überschrieben
If you enter an ID from the naming catalog, the chosen name above will be overwritten.

Ben.ID:

Für Mengeneinheit Stück: Feld leer lassen.
Unit of Measure each: leave field empty

Maßeinheit:

Beziehung ☐ Beim Erstellen öffnen

< Zurück Weiter > Abschließen Schließen

Choose a name from the naming catalog.

Neues Element

Objekterstellungsinformationen

i Der Wert sollte einem der folgenden Muster entsprechen (bewegen Sie die Maus, um alle anzuzeigen).

FFG Engineering Item

Allgemein

▼ Elementinformationen (Erforderlich)

ID:

Name*:

Falls Sie eine ID aus dem Namenskatalog wählen, wird der oben eingetragene Name überschrieben.
If you enter an ID from the naming catalog, the chosen name above will be overwritten.

Ben.ID:

Für Mengeneinheit Stück
Unit of Measure each: le

Maßeinheit:

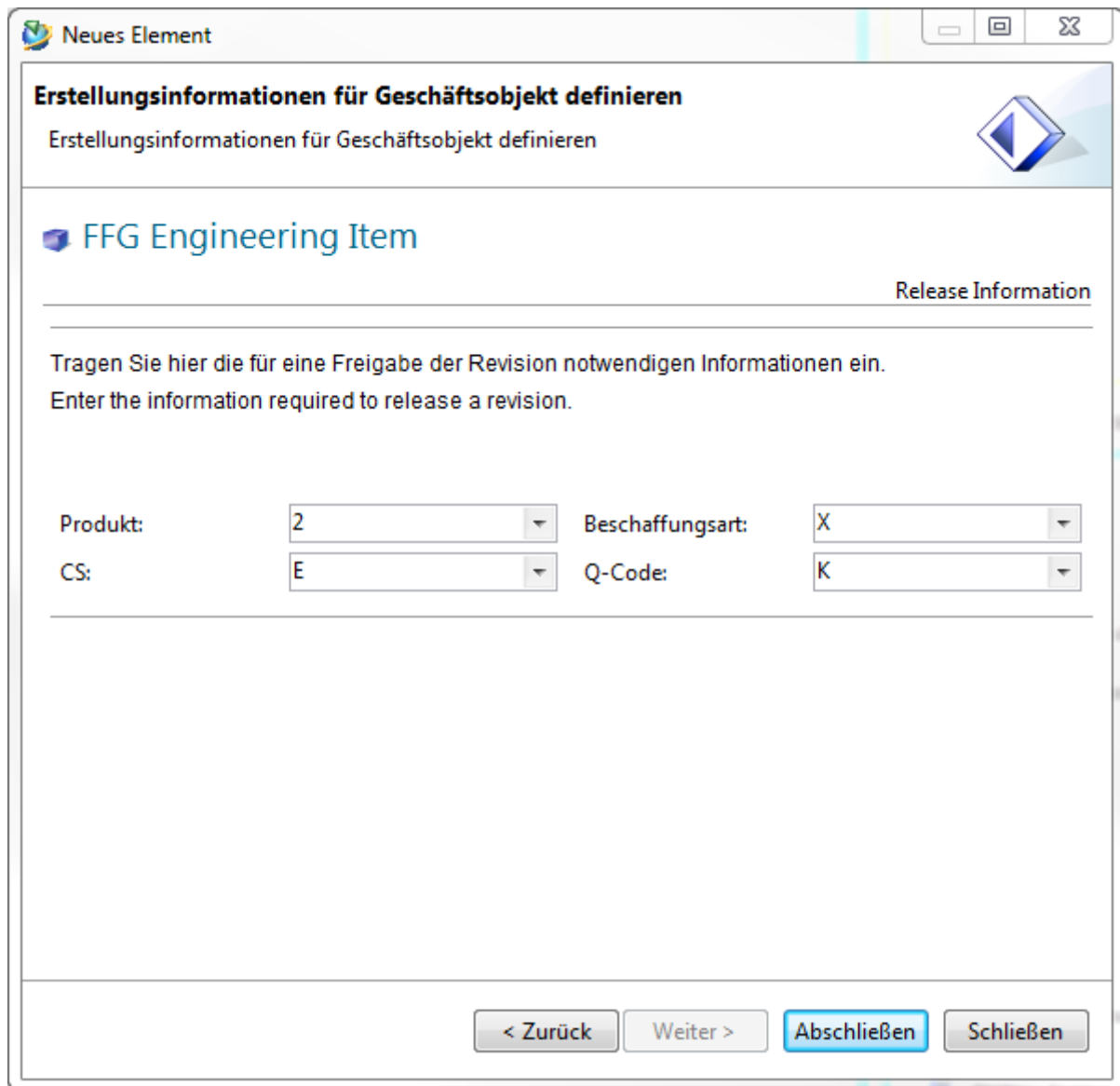
Wert	Beschreibung
1
11	ABDECKBLECH SHEET METAL COVER
13	ABDECKHAUBE SHEET METAL CAP
15	ABDECKPLATTE COVER PLATE
19	ABDECKRING GUARD RING
23	ABDECKUNG COVER-GUARD
28	ABDICHTUNG SEAL
30	ABFLUSSRINNE TROUGH
33	ABGUSS CASTING
34	ABLAGE DEPOSIT

1 - 50 Werte angezeigt. Für weitere Werte scrollen.

Beziehung

Enter the essential master data.

Press „Finish“.



Neues Element

Erstellungsinformationen für Geschäftsobjekt definieren

Erstellungsinformationen für Geschäftsobjekt definieren

FFG Engineering Item

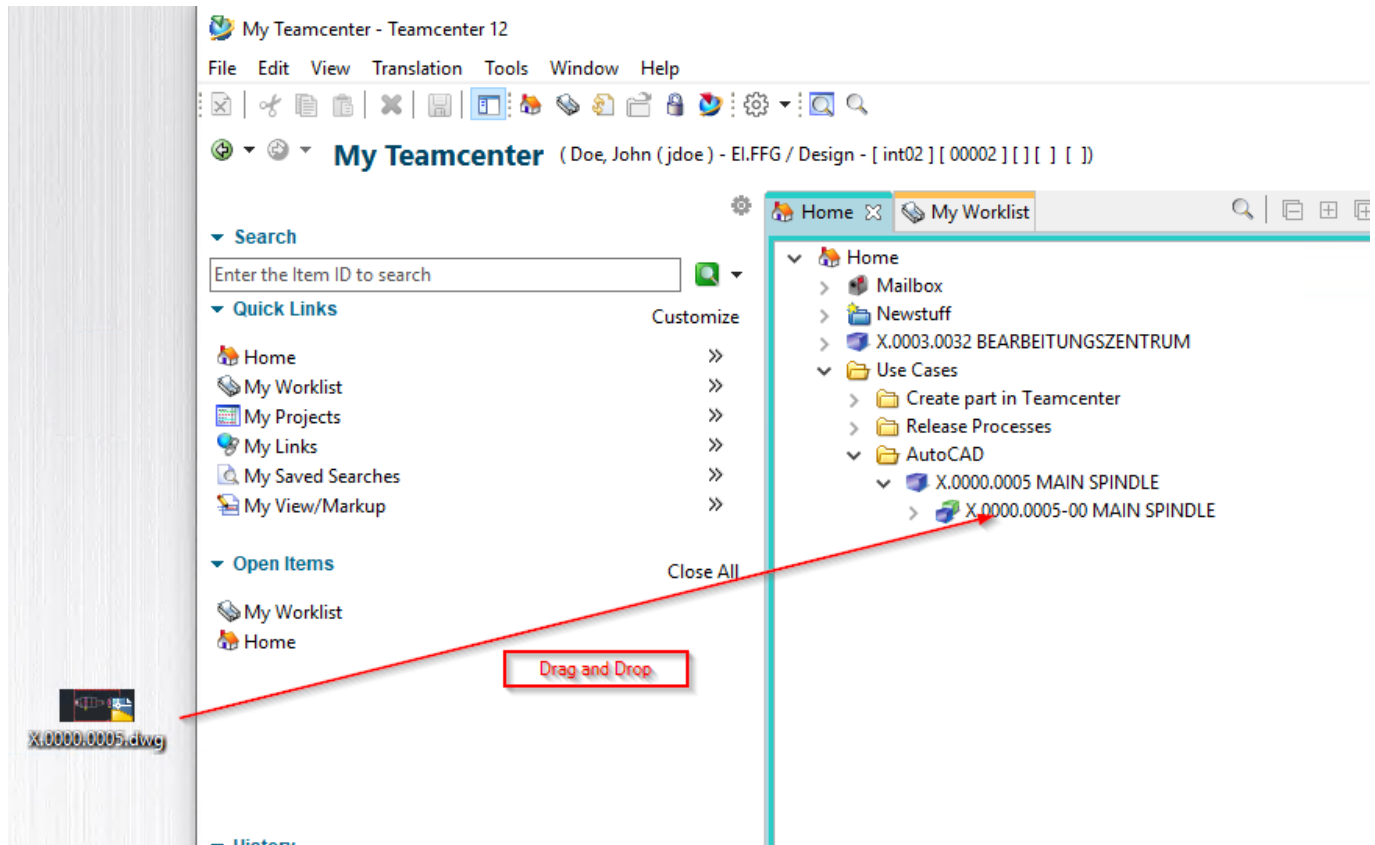
Release Information

Tragen Sie hier die für eine Freigabe der Revision notwendigen Informationen ein.
Enter the information required to release a revision.

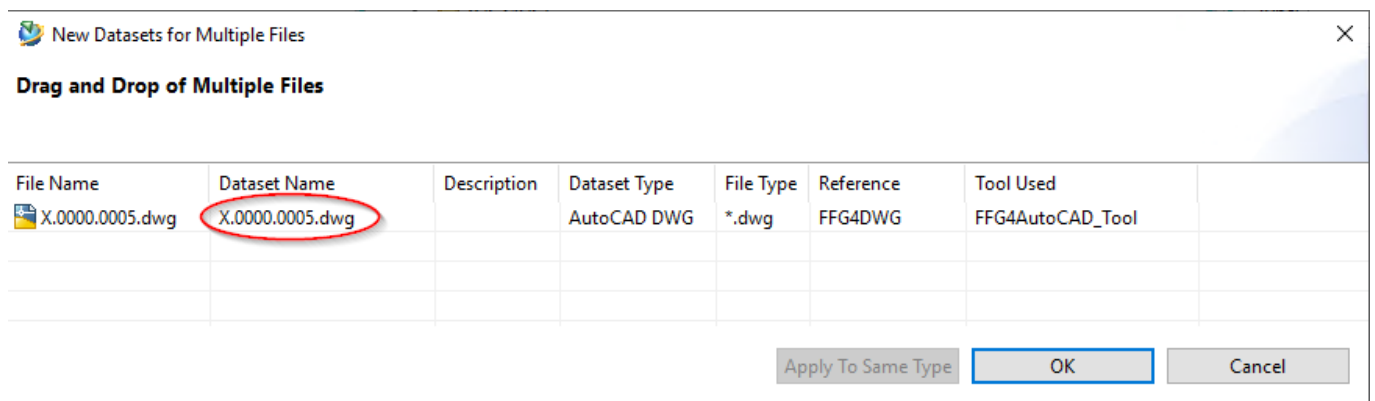
Produkt:	2	Beschaffungsart:	X
CS:	E	Q-Code:	K

< Zurück Weiter > **Abschließen** Schließen

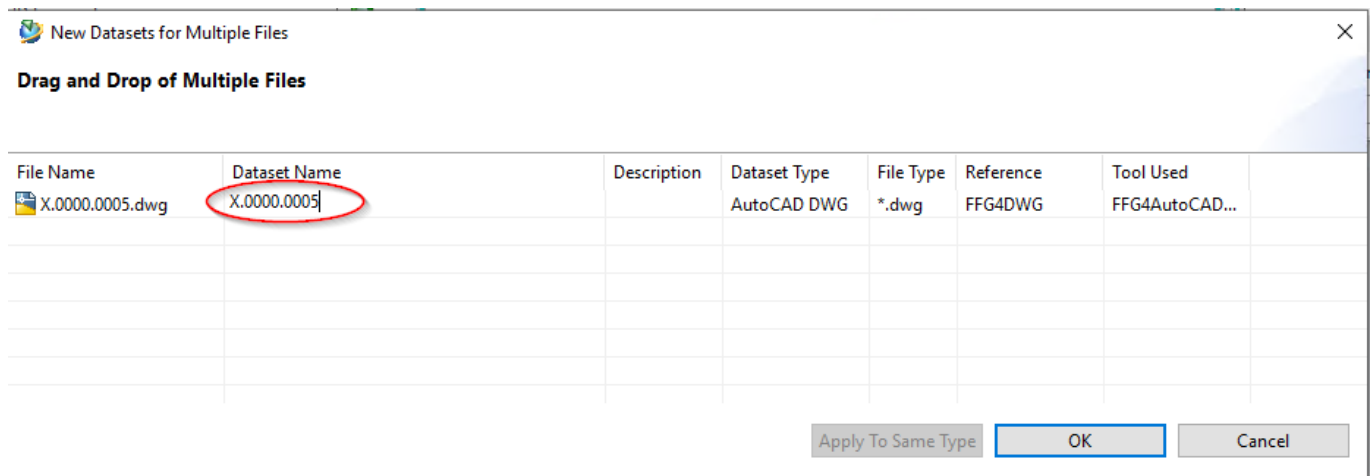
Now take an existing AutoCAD file or create a new file with AutoCAD and drag and drop it onto the newly created revision in Teamcenter.



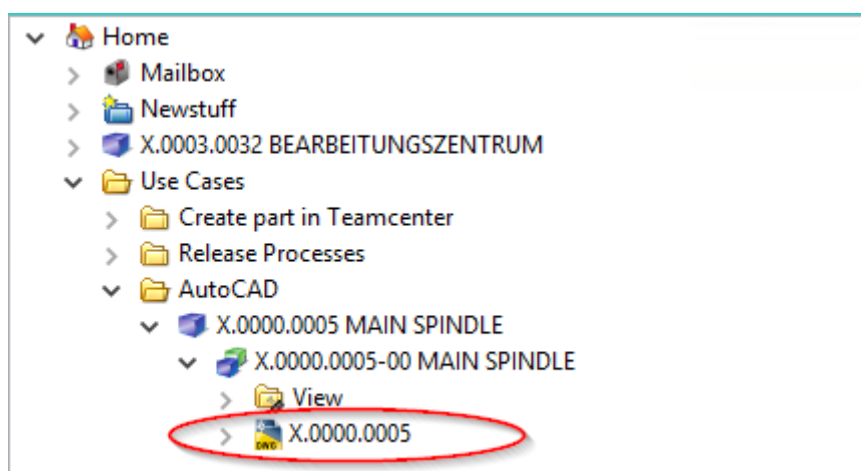
The following dialog appears. Note that the „Dataset Name“ corresponds to the name of the file.



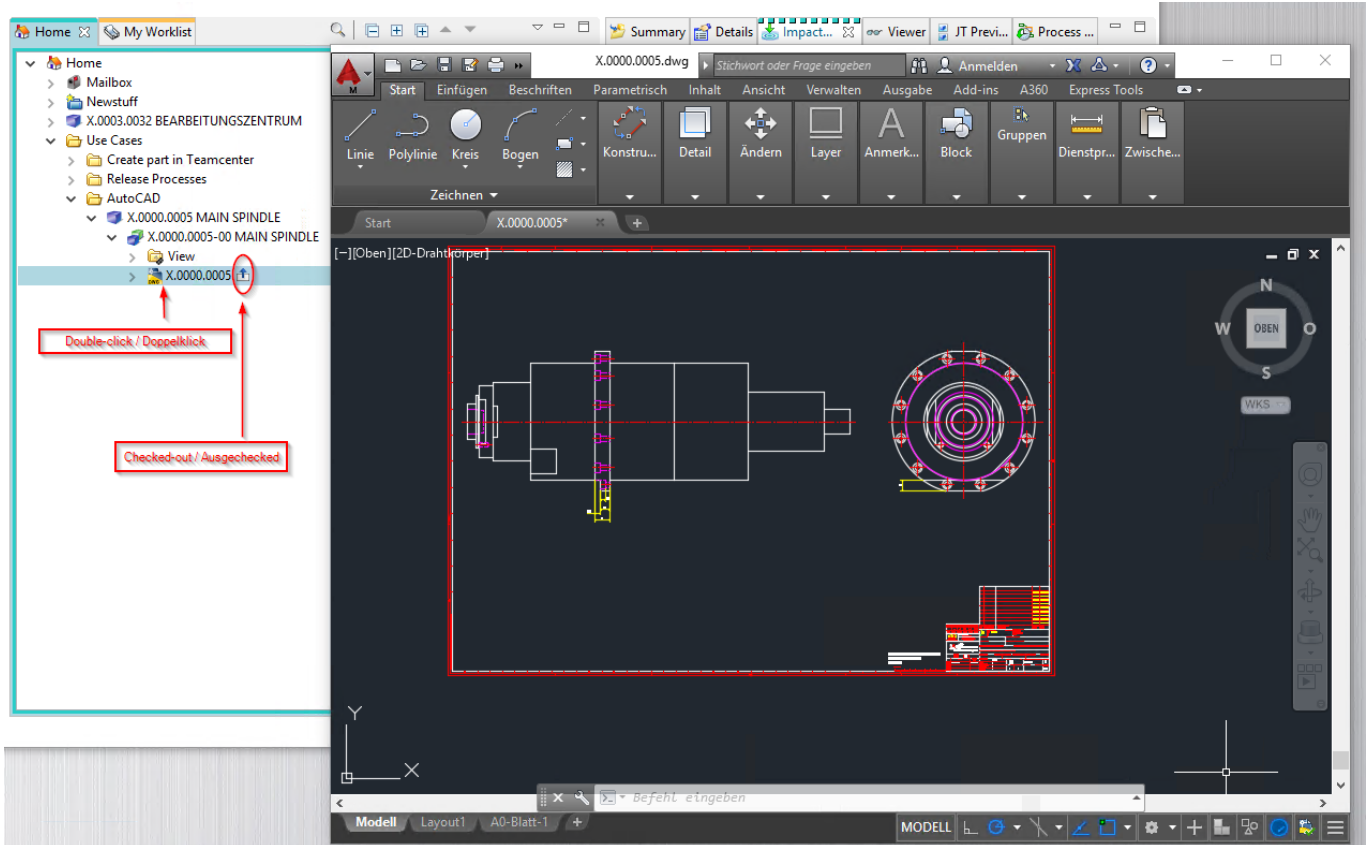
It makes sense to change the dataset name so that you remove the extension .dwg and, if necessary, equate the name with the item's part number. To do this, double-click on the dataset name, make these changes and then confirm the changes with the „Enter“ key.



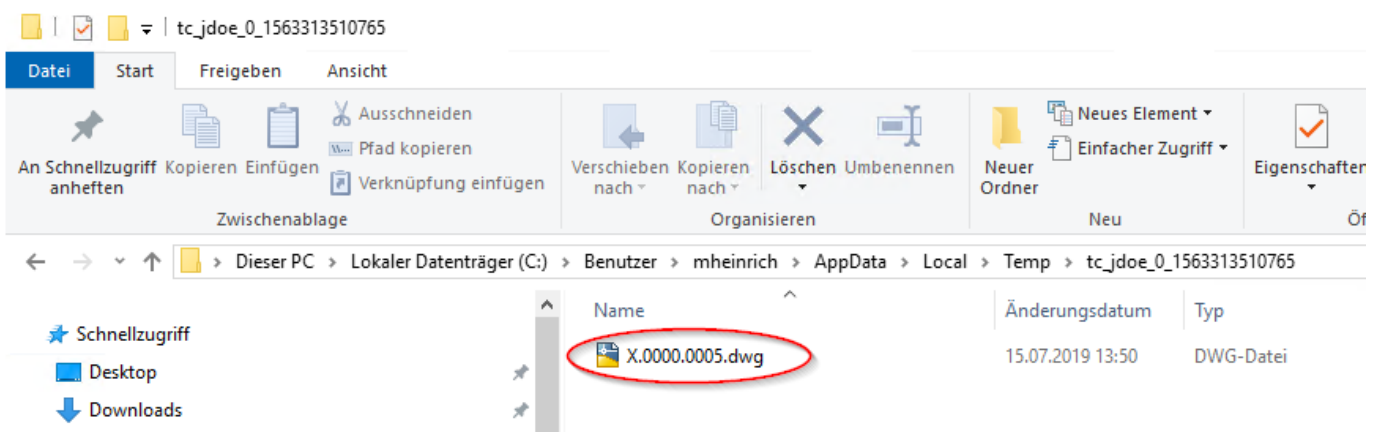
Then press „OK“. The file is now attached to the revision as a so-called „dataset“ and is thus available in the PLM system.



To edit the AutoCAD file further, double-click on the dataset. AutoCAD is opened and the file is loaded.



Note: The file will be checked out to a local directory in the temporary folder of your computer when opened. All changes are saved there as long as the AutoCAD program remains open. If necessary, make sure that a „Checked-Out“ symbol is displayed on the dataset.



After finishing the work, save the file and close AutoCAD. The file will be checked in to Teamcenter and the „Checked-Out“ icon will disappear. This process may take some time because the file is uploaded to the volume server in the background.

