

# Inhaltsverzeichnis

<b>5 Working with NX</b>	<b>3</b>
<b>5.1 Creating items in Teamcenter</b>	<b>3</b>
<b>5.2 Preparation</b>	<b>4</b>
<b>5.3 Create Items with the help of NX</b>	<b>4</b>
<b>5.4 Revision and save parts</b>	<b>5</b>
<b>5.5 Teamcenter Navigator</b>	<b>6</b>
<b>5.6 Teamcenter Navigator Search</b>	<b>7</b>
<b>5.7 Teamcenter Navigator Advanced Search</b>	<b>9</b>
<b>5.8 Teamcenter functions in the assembly Navigator</b>	<b>9</b>



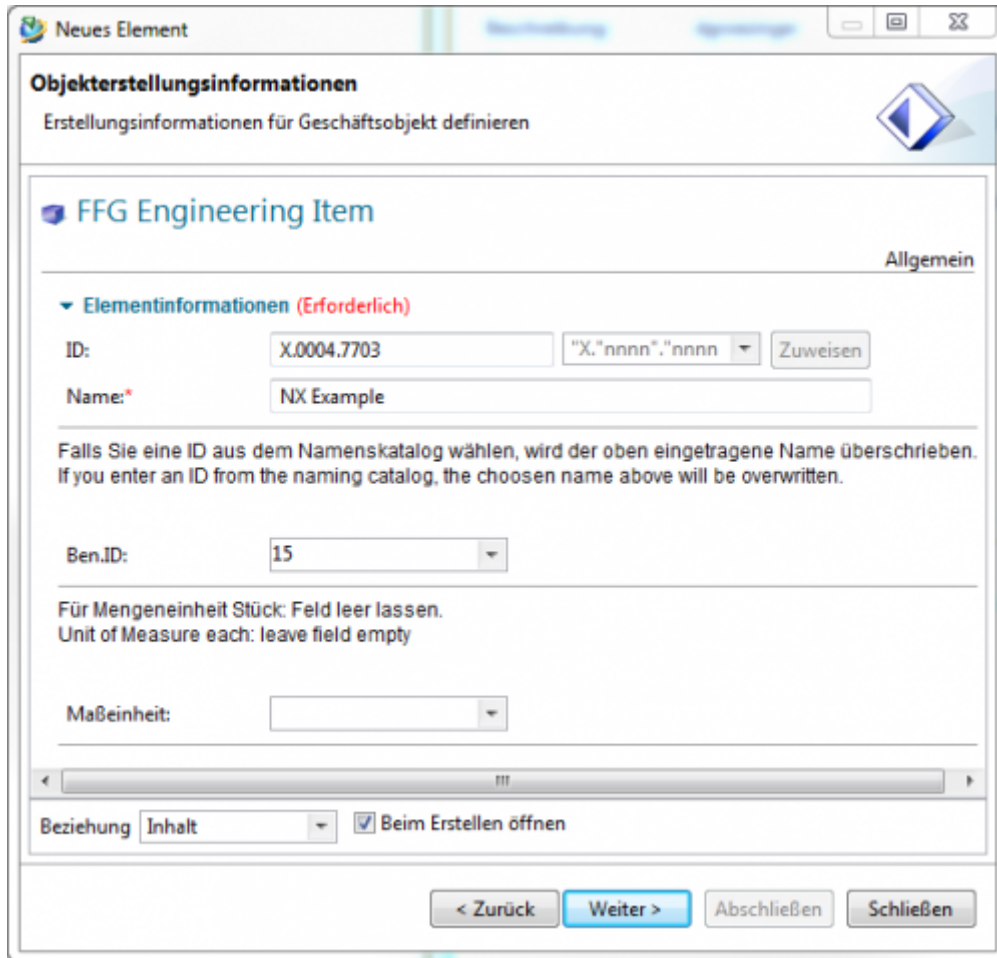
# 5 Working with NX

## 5.1 Creating items in Teamcenter

Create a new part in Teamcenter as usual:

Select „File→New→Item“ and select the type  FFG Engineering Item.

Assign an item ID and assign a (temporary) name.

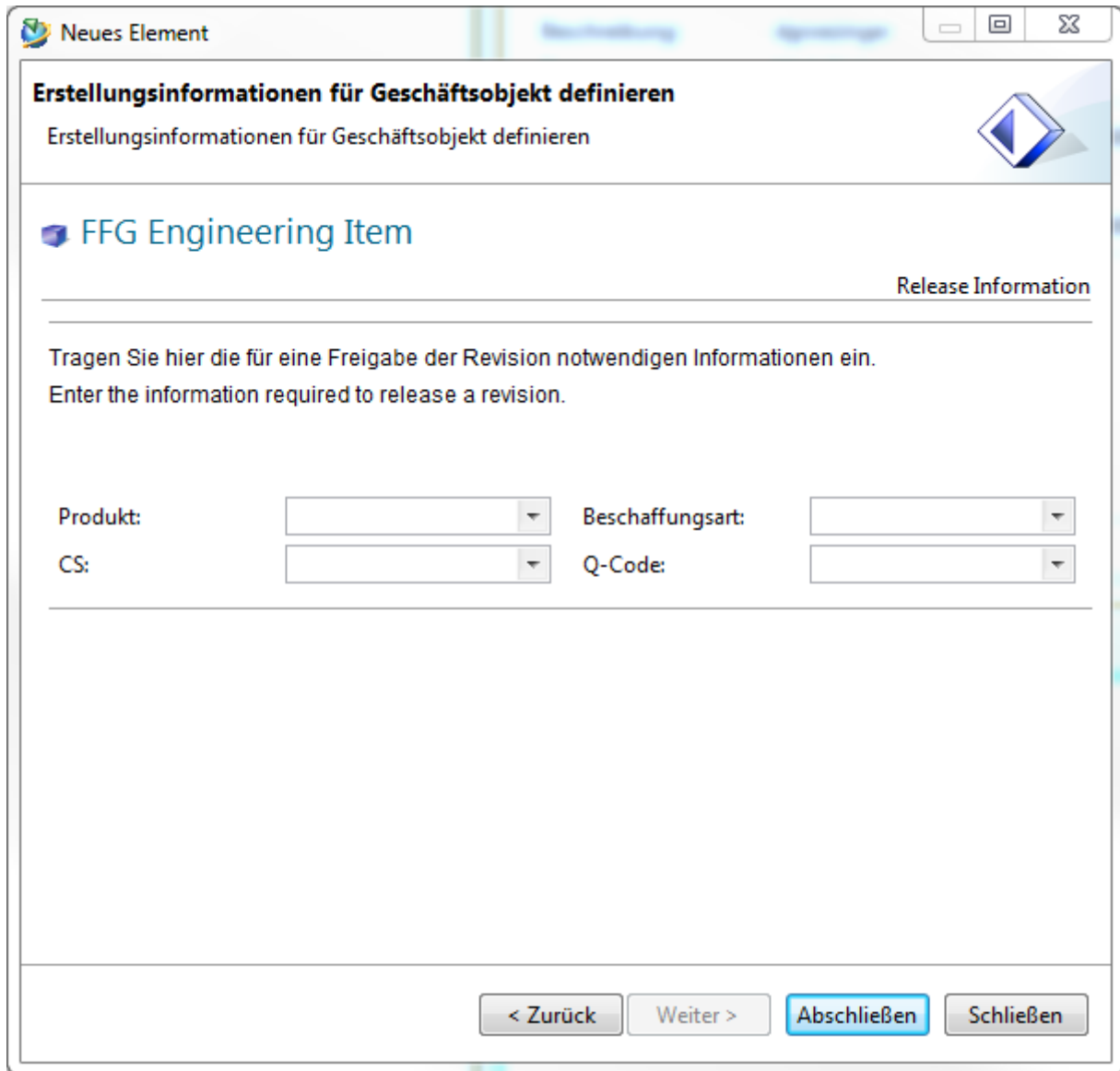


Choose a name from the naming catalog.

Unit of Measure = Empty (each)

Press „Next“.

Enter the essential master data.



Neues Element

**Erstellungsinformationen für Geschäftsobjekt definieren**

Erstellungsinformationen für Geschäftsobjekt definieren

**FFG Engineering Item**


Release Information

Tragen Sie hier die für eine Freigabe der Revision notwendigen Informationen ein.  
Enter the information required to release a revision.


Produkt:  Beschaffungsart:

CS:  Q-Code:

< Zurück Weiter > Abschließen Schließen

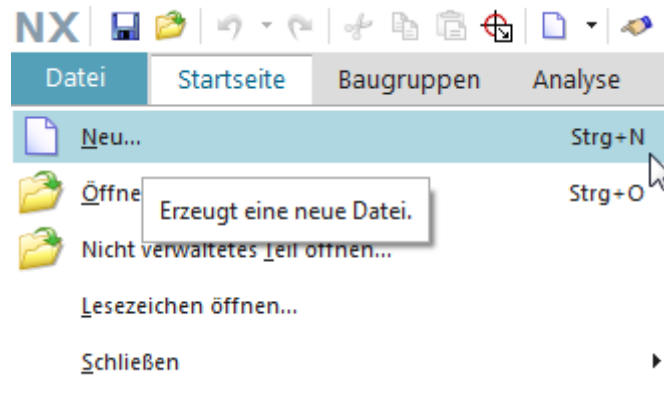
Press „Finish“. Then select the newly created item or item revision and start NX via  in the menu bar. Once you save the part file in NX, the dataset (UGMaster) is placed under the Item Revision.

## 5.2 Preparation

Before you start working in NX, please first load the role „FFG Standard“ via the sidebar .

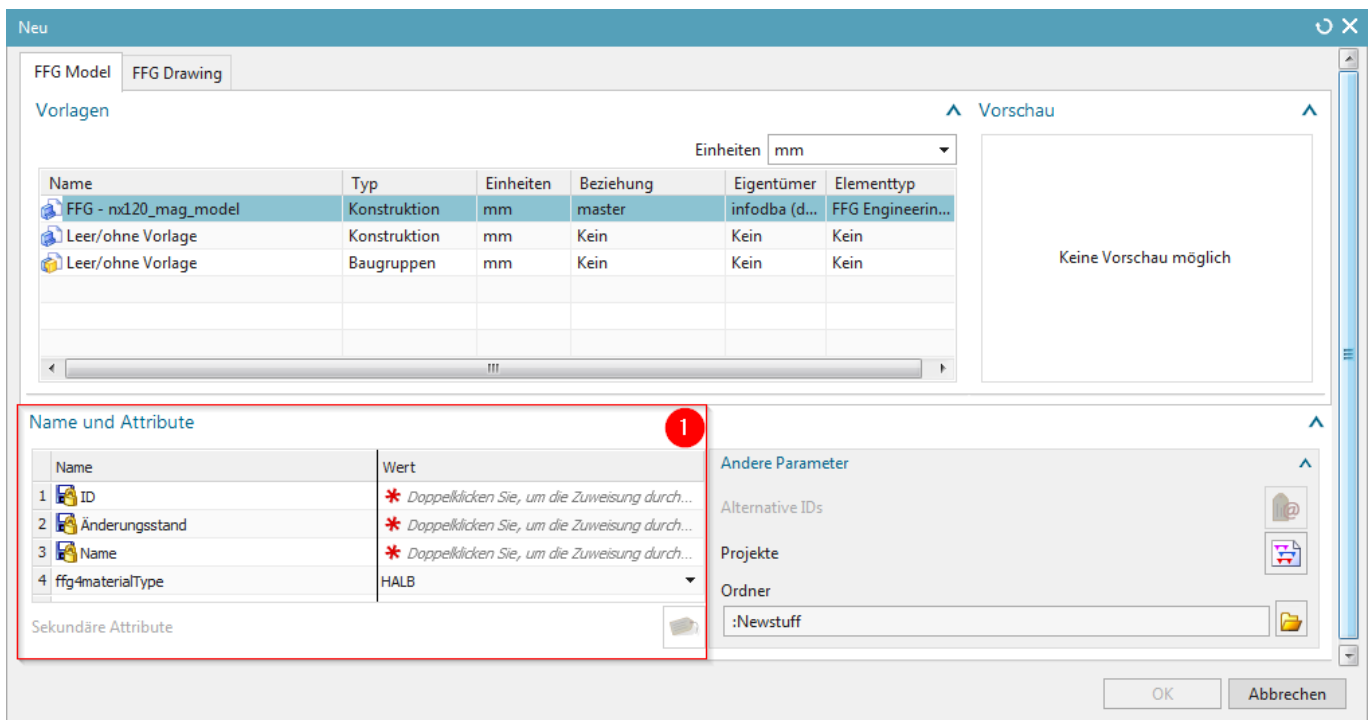
## 5.3 Create Items with the help of NX

- The creation of a new item in Teamcenter is performed in NX as follows:



1. Create a new data record via file → New...
2. Create a new record via Ctrl+N

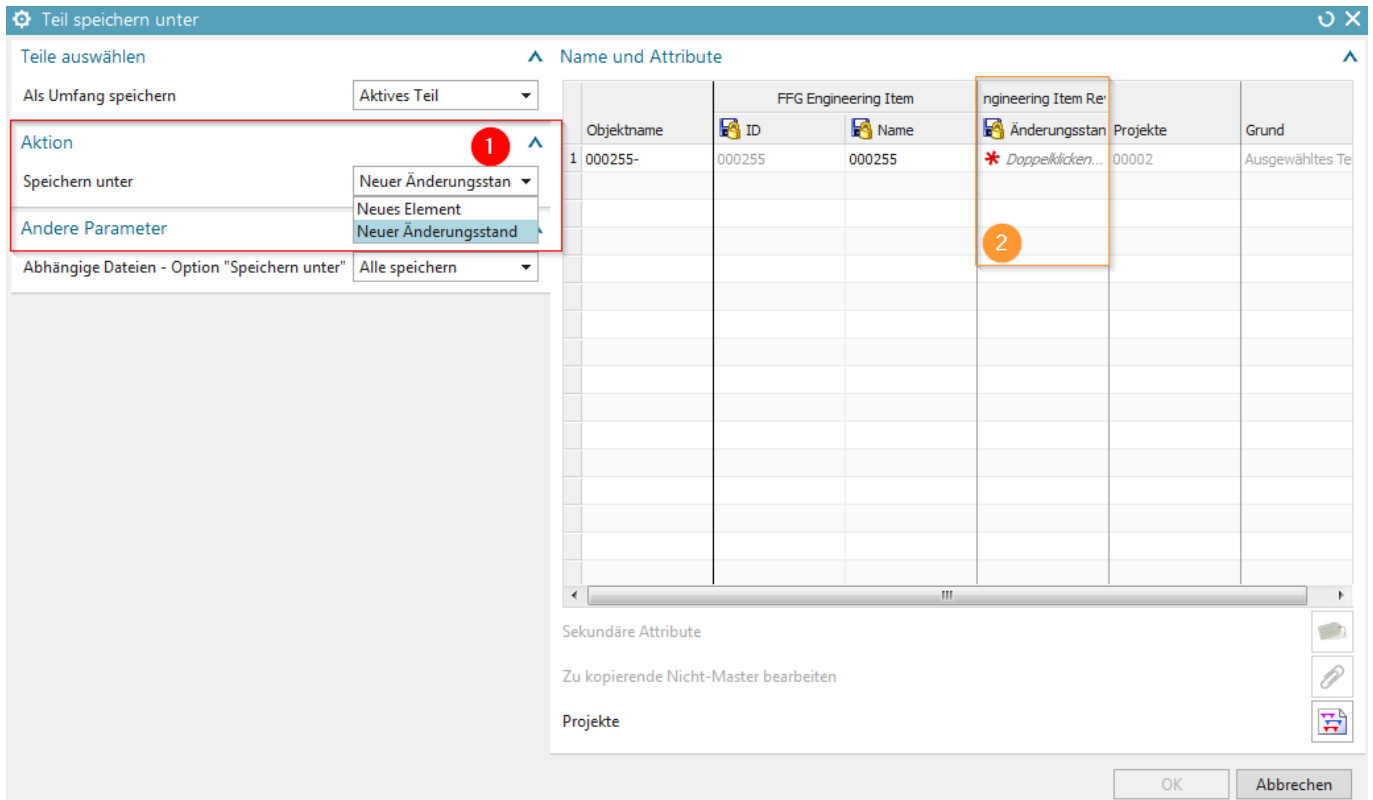
- The creation of a new item as master part is visible as relationship „master“ and contains the model.
- The creation of a new non-master part is visible as relationship „specification“ and contains the DrawingPart.



Here, certain mandatory attributes must be assigned to the newly created item.

## 5.4 Revision and save parts

- The revision of **Master parts** is also carried out: Menu File → Save → Save as...
- Create as new change status (revision)
- Save as new element creates a new part under a new part number
- Save as Alt-Rep creates a new dataset with altern. Geometry presentation under the current part / revision master.



1. Save as action - New element / New change status
2. Double-click to assign a new revision number to the Item Revision.

- If an item revision contains dependent files in addition to the **Master part**, the documents to be transferred can be selected if this is defined in the preferences.

## 5.5 Teamcenter Navigator

- The Teamcenter Navigator shows the current folder structure of the user.
- The columns can be adjusted as required.

☐ Teamcenter Navigator

Ansichtsstil

Struktur

Objekt	Nummer	Änderu...	Beschreibung	Typ	Ausge...
Teamcenter					
Home			tcadm	Persönliche A...	
Newstuff			tcadm	Newstuff Fol...	
X.0003.0000	X.0003.0000			FFG Engineeri...	
X.0003.0000...	X.0003.0000	00		FFG Engineeri...	
X.0003.0...	X.0003.0000	00		Model	
X.0003.0001 TR...	X.0003.0001			FFG Engineeri...	
X.0003.0001...	X.0003.0001	00		FFG Engineeri...	
X.0003.0...	X.0003.0001	00		Model	
X.0003.0...	X.0003.0001	00	X.0003.0001-00	Drawing	
XD.0000.0001	XD.0000.0001			FFG Document	
Kürzlich					
Meine Suche					
Projekte					
Zwischenablage					

- The following file operations are possible with RMT:

Home			tcadm	Persönliche A...
Newstuff			tcadm	Newstuff Fol...
X.0003.0000	X.0003.0000			FFG Engineeri...
X.0003.0000...	X.0003.0000			FFG Engineeri...
X.0003.0...	X.0003.0000			Model
X.0003.0001	X.0003.0001			FFG Engineeri...
X.0003.0001...	X.0003.0001			FFG Engineeri...
X.0003.0...	X.0003.0001			Model
X.0003.0...	X.0003.0001			Drawing
XD.0000.0001	XD.0000.0001			FFG Document
Kürzlich				
Meine Suche				
Projekte				
Zwischenablage				

Aktualisieren  
Öffnen  
Ausschneiden  
Kopieren 1  
Komponente hinzufügen 2  
Projekte... 3  
Anforderungsverknüpfungen anzeigen

- Cut and Copy has the same effect as in the „My Teamcenter“ environment
- Opens the „Add Component“ dialog
- Add the object to a project

## 5.6 Teamcenter Navigator Search

☐ Teamcenter Navigator

Ansichtsstil

Struktur

Objekt	Nummer	Änderu...	Beschreibung	Typ	Ausgec...
Teamcenter					
Home			tcadm	Persönliche A...	
Newstuff			tcadm	Newstuff Fol...	
X.0003.0000	X.0003.0000			FFG Engineeri...	
X.0003.0000...	X.0003.0000	00		FFG Engineeri...	
X.0003.0...	X.0003.0000	00		Model	
X.0003.0001 TR...	X.0003.0001			FFG Engineeri...	
X.0003.0001...	X.0003.0001	00		FFG Engineeri...	
X.0003.0...	X.0003.0001	00		Model	
X.0003.0...	X.0003.0001	00	X.0003.0001-00	Drawing	
XD.0000.0001	XD.0000.0001			FFG Document	
Kürzlich					

Suchen

X.000\*

Erweiterte Suche...

Filter durchsuchen

Detailebene

Vollständig

Änderungsstand

Alle

Typ

Alle

Ladeoptionen für Baugruppen

☐ Nur Struktur laden

Option

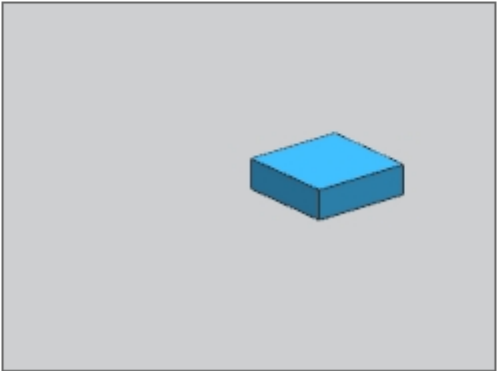
Teilweise geladen

Kontext Änderungsstandregel/Konfiguration

Latest Working

Dialogfenster "Ladeoptionen"

Vorschau



1. Search Wildcards as in Teamcenter area
2. Advanced Search
3. Loading options for assemblies



## 5.7 Teamcenter Navigator Advanced Search

Erweiterte Suche

Suche definieren

Suche nach: Beliebiges Objekt

Suchkriterien

Suchzeichenfolge

ID: X.000\*

Name:

Beschreibung:

Änderungsstand:

Datumskriterium

Datumskriterium: Kein

Eigentümer

Eigentümer:

Eigentumsgruppe:

Status

Freigabestatus:

Suche starten Neue Suche Speichern unter

Durchsuchen

Suche in: Letzte Suche

Objekt	Nummer	Änderu...	Beschreibung	Typ	Ausgeg...	Status	Datum geän...
X.0000.0002-00 LOCATI...	X.0000.0002	00		FFG Engineeri...			15-Jul-2019 1...
X.0000.0003-00 PIN	X.0000.0003	00		FFG Engineeri...		ER	15-Jul-2019 1...
X.0000.0004-00 HOLDIN...	X.0000.0004	00		FFG Engineeri...		ER	15-Jul-2019 1...
X.0000.0005-00 MAIN SP...	X.0000.0005	00		FFG Engineeri...		ER	17-Jul-2019 0...
X.0000.0007-00 INDEX T...	X.0000.0007	00		FFG Engineeri...		ER, PS	16-Jul-2019 0...
X.0000.2859-00 ELEKTRO...	X.0000.2859	00		FFG Engineeri...			16-Jul-2019 1...
X.0000.2860-00 SCHLAU...	X.0000.2860	00		FFG Engineeri...			16-Jul-2019 1...
X.0000.2861-00 ELEKTRO...	X.0000.2861	00		FFG Engineeri...			16-Jul-2019 1...
X.0000.2862-00 ENDANS...	X.0000.2862	00		FFG Engineeri...			16-Jul-2019 1...
X.0000.2863-00 ELEKTRO...	X.0000.2863	00		FFG Engineeri...			16-Jul-2019 1...
X.0000.2864-00 ENERGIE...	X.0000.2864	00		FFG Engineeri...			16-Jul-2019 1...
X.0000.2865-00 FLUIDKO...	X.0000.2865	00		FFG Engineeri...			16-Jul-2019 1...
X.0000.2866-00	X.0000.2866	00		FFG Engineeri...			16-Jul-2019 1...
X.0000.2868-00 KABEL	X.0000.2868	00		FFG Engineeri...			16-Jul-2019 1...
X.0000.2869-00 ELEKTRO...	X.0000.2869	00		FFG Engineeri...			16-Jul-2019 1...
X.0000.2870-00 INSTALL...	X.0000.2870	00		FFG Engineeri...			16-Jul-2019 1...
X.0000.2871-00 GEBERK...	X.0000.2871	00		FFG Engineeri...			16-Jul-2019 1...
X.0000.2872-00 KABEL	X.0000.2872	00		FFG Engineeri...			16-Jul-2019 1...

Ergebnis

Number: Änderungsstand: Name: Zurück

OK Abbrechen

1. Search criteria
2. Look for it:
3. Display last searches
4. ...Searches saved in „My Teamcenter“

## 5.8 Teamcenter functions in the assembly Navigator

- Keep all Teamcenter information up to date

Baugruppen-Navigator

Objekt	Nummer	Änderu...
<div><div><div></div><div></div></div><div>X.0000.3311-00 STAENDERBAUGR...</div></div>	X.0000.3311	00
<div><div><div></div><div></div></div><div>X.0000.3414-00 STAENDER</div></div>		
<div><div><div></div><div></div></div><div>X.0000.2986-00 HAUPTLAGE</div></div>		
<div><div><div></div><div></div></div><div>X.0000.2986-00 HAUPTLAGE</div></div>		
<div><div><div></div><div></div></div><div>X.0000.3567-00 ANSCHLAG</div></div>		
<div><div><div></div><div></div></div><div>X.0000.3567-00 ANSCHLAG</div></div>		
<div><div><div></div><div></div></div><div>X.0000.2875-00 GEGENLAGE</div></div>		
<div><div><div></div><div></div></div><div>X.0000.2875-00 GEGENLAGE</div></div>		
<div><div><div></div><div></div></div><div>X.0000.2862-00 ENDANSCHL</div></div>		
<div><div><div></div><div></div></div><div>X.0000.2862-00 ENDANSCHL</div></div>		
<div><div><div></div><div></div></div><div>X.0000.3059-00 ENDBLOCK</div></div>		
<div><div><div></div><div></div></div><div>X.0000.3274-00 MOTORBAU</div></div>		
<div><div><div></div><div></div></div><div>X.0000.3369-00 MOTORBAU</div></div>		
<div><div><div></div><div></div></div><div>X.0000.3475-00 MOTORBAU</div></div>		
<div><div><div></div><div></div></div><div>X.0000.3083-00 ANBAUTEILE</div></div>		
<div><div><div></div><div></div></div><div>X.0000.3181-00 ANBAUTEILE</div></div>		
<div><div><div></div><div></div></div><div>X.0000.3274-00 MOTORBAU</div></div>		
<div><div><div></div><div></div></div><div>X.0000.3369-00 MOTORBAUGR...</div></div>	X.0000.3369	00

Baugruppe auswählen

Teamcenter-Informationen aktualisieren

Öffnen

Struktur aktualisieren...

Beim Speichern "Präzise" aktivieren

Anordnungen

Navigaturreihenfolge

Ausblenden

Anzeigen

Nur anzeigen

Projekte...

Eigenschaften

1.

Update information from Teamcenter

2.

Add the object to a project