

# Inhaltsverzeichnis

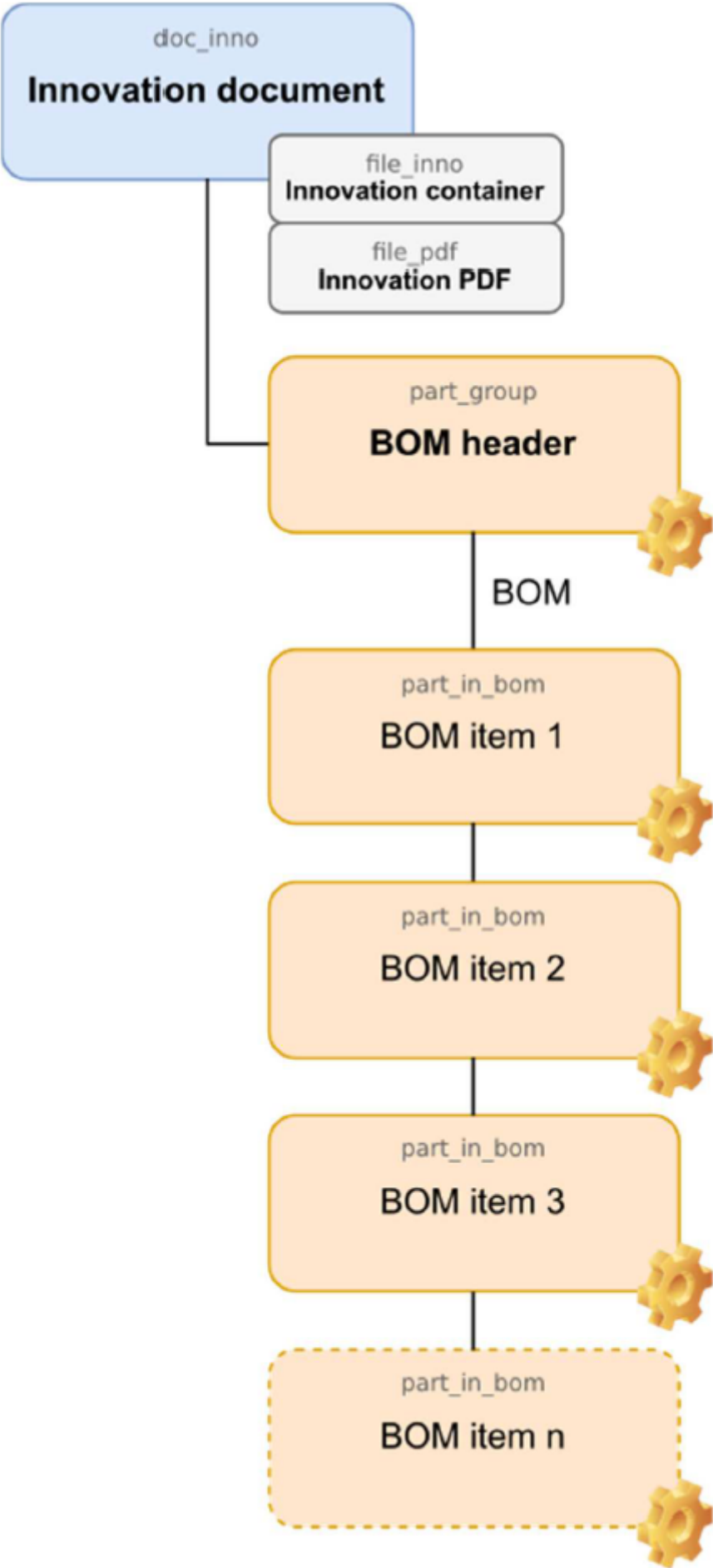
<b>2. Function description</b>	3
<b>2.1. data model</b>	3
<b>2.2. module dialogs</b>	5
2.2.1 New Project	5



## 2. Function description

### 2.1. data model

The data model describes the objects in Teamcenter that are used by the integration to store project information.

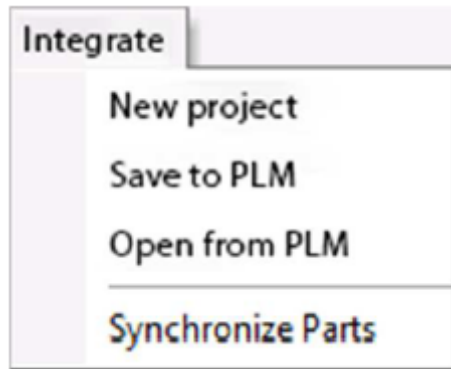


Legend:

- Blue boxes: Items
- Orange boxes: Items
- Grey boxes: Datasets

## 2.2. module dialogs

The integration functions are started as separate modules with their own dialogs from the Integrate menu in EPLAN.



### Menu: Integrates

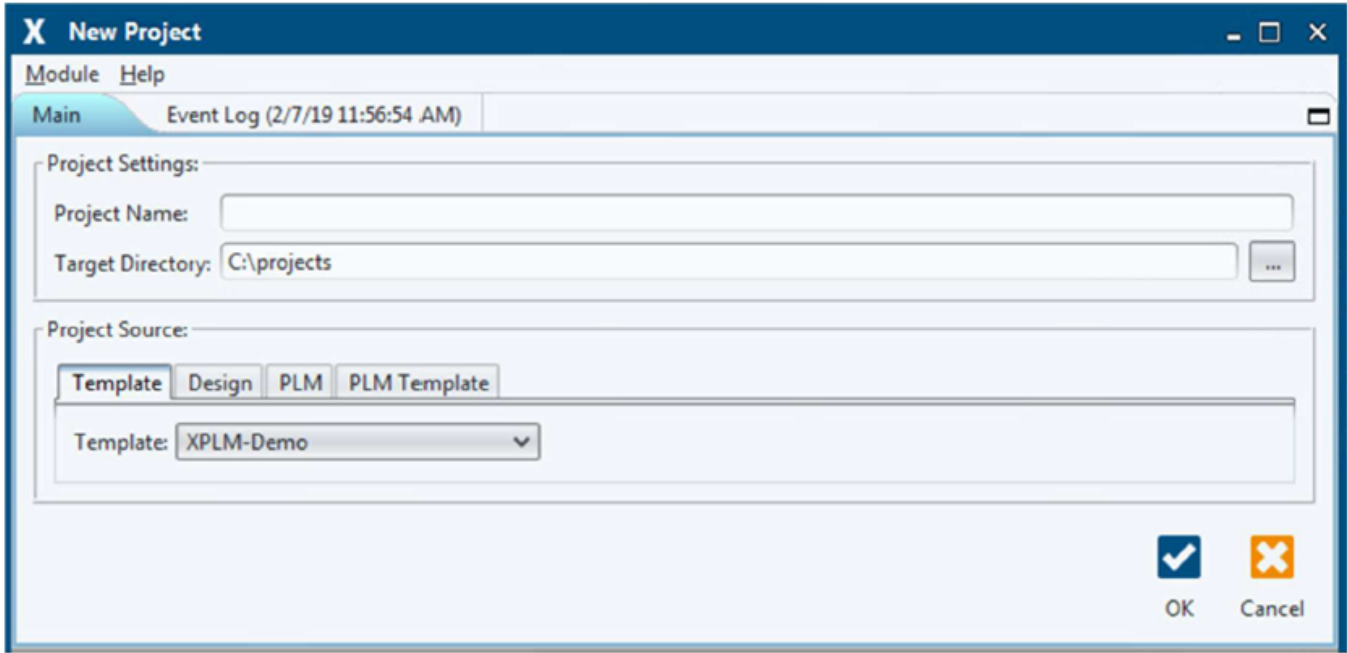
- New Project: Creates a new project.
- Save to PLM: Manages all relevant project information in Teamcenter, for example the original project files, generated output files and the parts list(s).
- Open from PLM: Downloads the project files from Teamcenter and opens the project read-only or for editing in EPLAN.
- Synchronize Parts: Manages parts, items and attributes bidirectionally between the library and Teamcenter.

All module dialogs have the same structure and are divided into the following areas:

- Menu bar
- Main functions
- Event log

### 2.2.1 New Project

Use this integration module to create new projects based on templates or existing projects.



**Area: Project Settings**

In this area you can define the project name and the project directory.

Project Name: Defines the name of the project. Target Directory: Defines the directory where the project will be saved.

**Project Source**

You can select a template or an existing project in this area.

<b>Template:</b>	Displays a selection list for templates stored in the template directory.
<b>Design:</b>	Opens a selection dialog for projects stored in the file system.
<b>PLM:</b>	Opens a search dialog for projects saved in Teamcenter.
<b>PLM Template:</b>	Displays a selection list for templates stored in Teamcenter.