

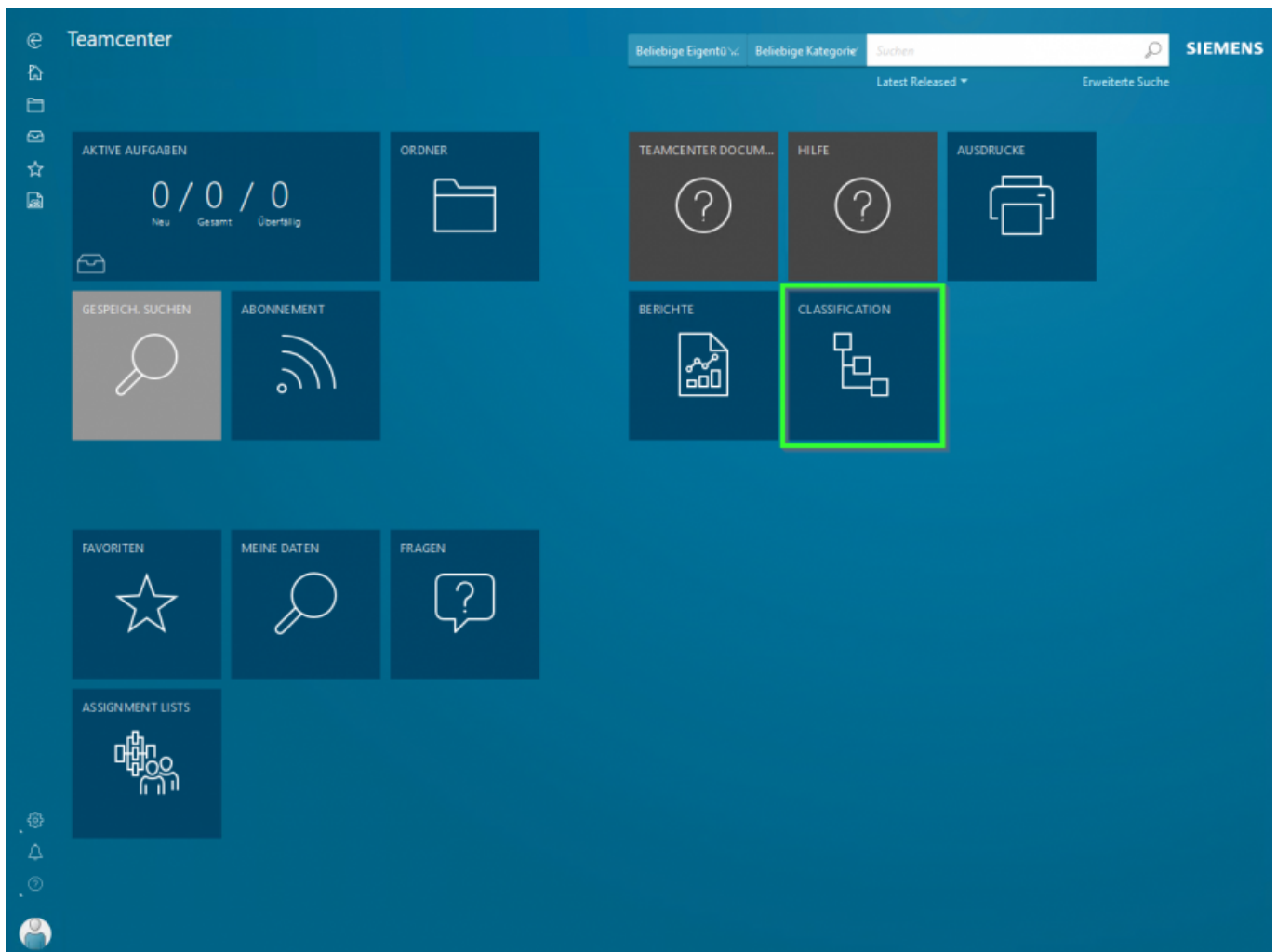
# Inhaltsverzeichnis

<b>Search via classification in the AWC</b>	3
<b>1. Call up classification via tile "Classification"</b>	3
<b>Select 2nd class to search in and click on "Search" button</b>	4
<b>3. The search result appears in the right-hand window</b>	5
<b>4. The search result can be refined using the filter on the left =&gt; select filter and click on "Apply all" at the bottom</b>	6

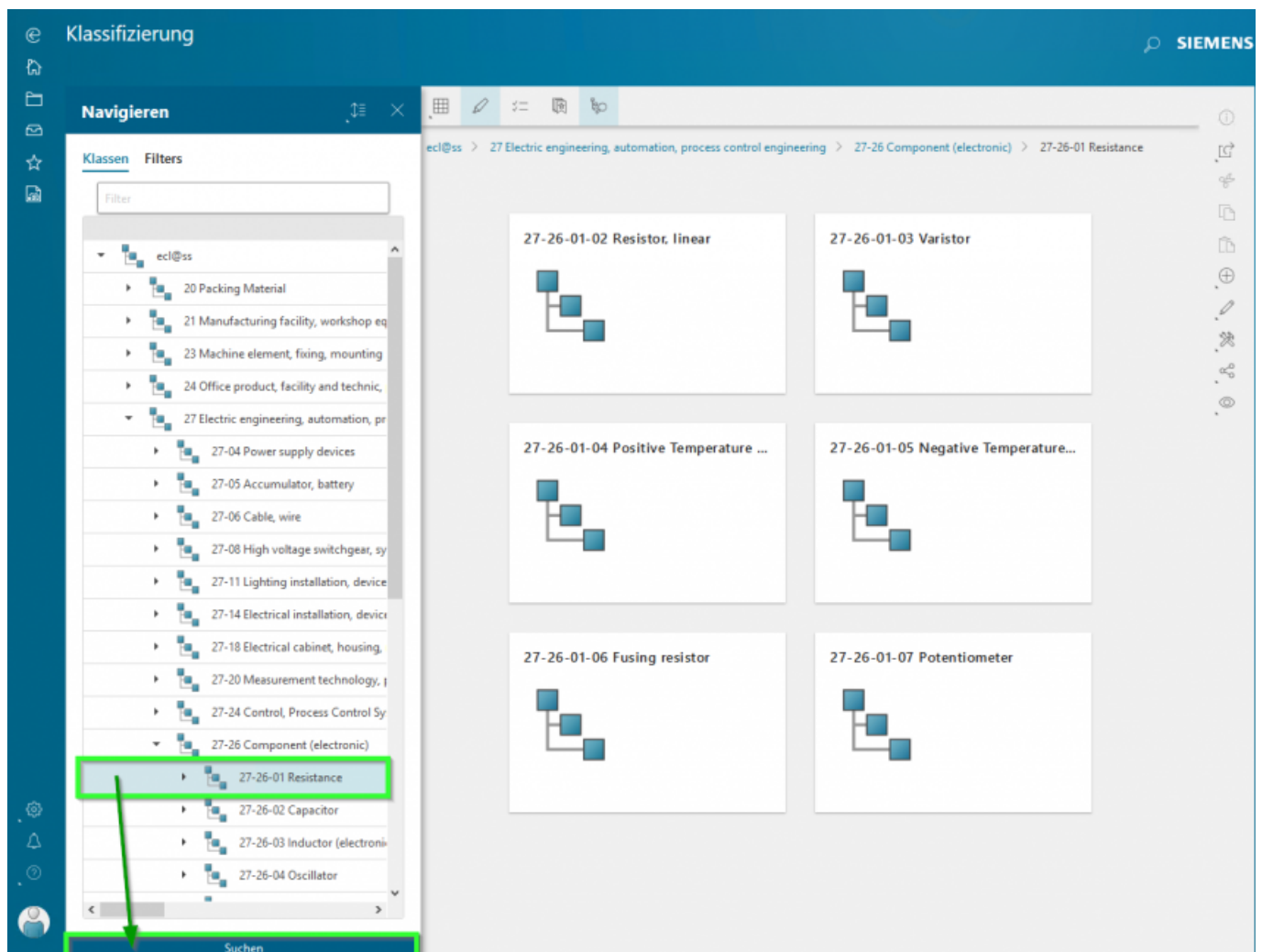


# Search via classification in the AWC

## 1. Call up classification via tile "Classification"



## Select 2nd class to search in and click on "Search" button



### 3. The search result appears in the right-hand window

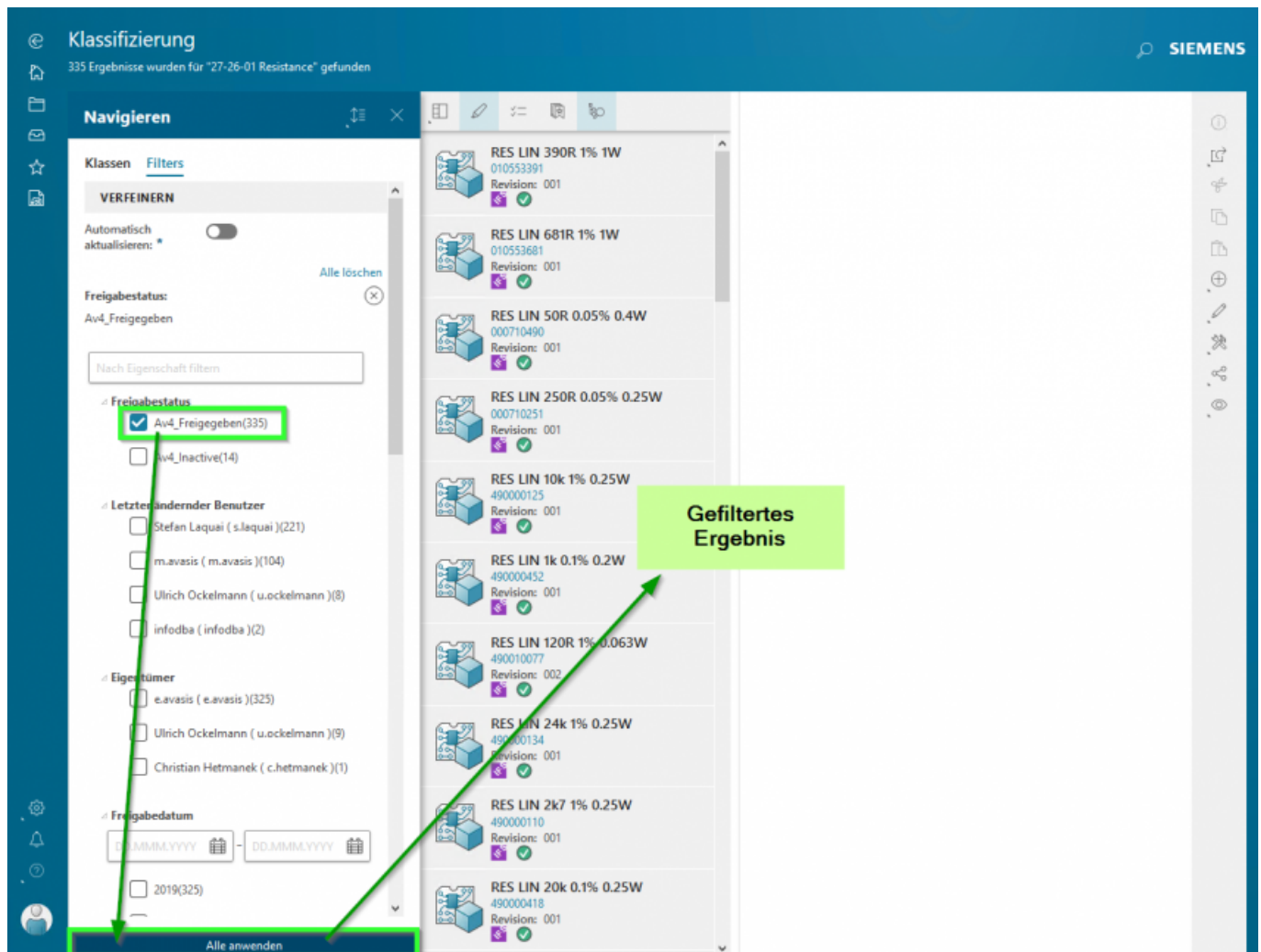
The screenshot displays the Siemens 'Klassifizierung' (Classification) software interface. The top bar shows the title 'Klassifizierung' and the Siemens logo. Below the title, a status message reads '349 Ergebnisse wurden für "27-26-01 Resistance" gefunden' (349 results were found for "27-26-01 Resistance").

The interface is divided into three main sections:

- Left Panel (Navigation):** Contains a 'Navigieren' (Navigate) section with a 'Klassen' (Classes) tab and a 'Filters' section. The 'Filters' section includes a 'VERFEINERN' (Refine) button, a toggle for 'Automatisch aktualisieren' (Automatic update), and a search bar 'Nach Eigenschaft filtern' (Filter by property). Below the search bar, there are several filter categories with checkboxes:
  - Letzter ändernder Benutzer** (Last changing user):
    - ☐ Stefan Laquai ( s.laquai )(221)
    - ☐ m.avis ( m.avis )(104)
    - ☐ Ulrich Ockelmann ( u.ockelmann )(22)
    - ☐ infodba ( infodba )(2)
  - Eigentümer** (Owner):
    - ☐ e.avis ( e.avis )(339)
    - ☐ Ulrich Ockelmann ( u.ockelmann )(9)
    - ☐ Christian Hetmanek ( c.hetmanek )(1)
  - Freigabedatum** (Release date):
    - DD.MM.YYYY - DD.MM.YYYY
    - ☐ 2019(325)
    - ☐ 2020(24)
  - Freigabestatus** (Release status):
    - ☐ Av4\_Freigegeben(335)
    - ☐ Av4\_inactive(14)
  - Anforderungskategorie** (Requirement category)

- Right Panel (Results):** Displays a list of search results, each with a 3D model icon, a part number, a description, and a revision status. The results are highlighted with a green border. The list includes:
- RES LIN 390R 1% 1W (010553391) Revision: 001
- RES LIN 681R 1% 1W (010553681) Revision: 001
- RES LIN 50R 0.05% 0.4W (000710490) Revision: 001
- RES LIN 250R 0.05% 0.25W (000710251) Revision: 001
- RES LIN 10k 1% 0.25W (490000125) Revision: 001
- RES LIN 1k 0.1% 0.2W (490000452) Revision: 001
- RES LIN 120R 1% 0.063W (490010077) Revision: 002
- RES LIN 24k 1% 0.25W (490000134) Revision: 001
- RES LIN 2k7 1% 0.25W (490000110) Revision: 001
- RES LIN 20k 0.1% 0.25W (490000418) Revision: 001

#### 4. The search result can be refined using the filter on the left => select filter and click on "Apply all" at the bottom



The filtered result appears in the right-hand window.