

Inhaltsverzeichnis

2. Teamcenter Basics	3
2.1. topics overview	3
2.2. user interface	3

2. Teamcenter Basics

2.1. topics overview

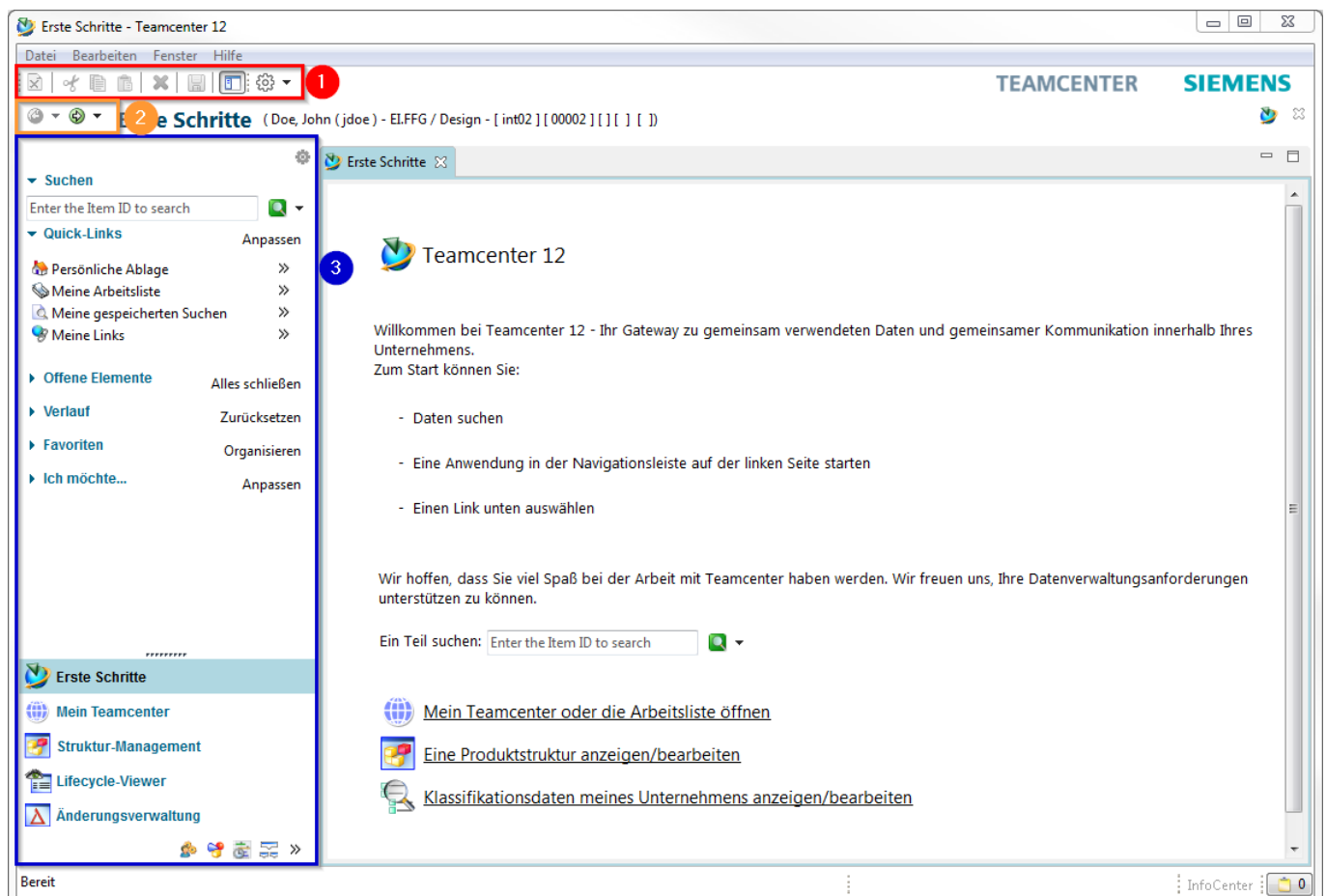
This training document deals with the elementary basics in Teamcenter.

The main focuses have been set as follows:

- User Interface
- The most important Teamcenter applications
- Organization
- Items & Revisions
- Data types
- Relations

2.2. user interface

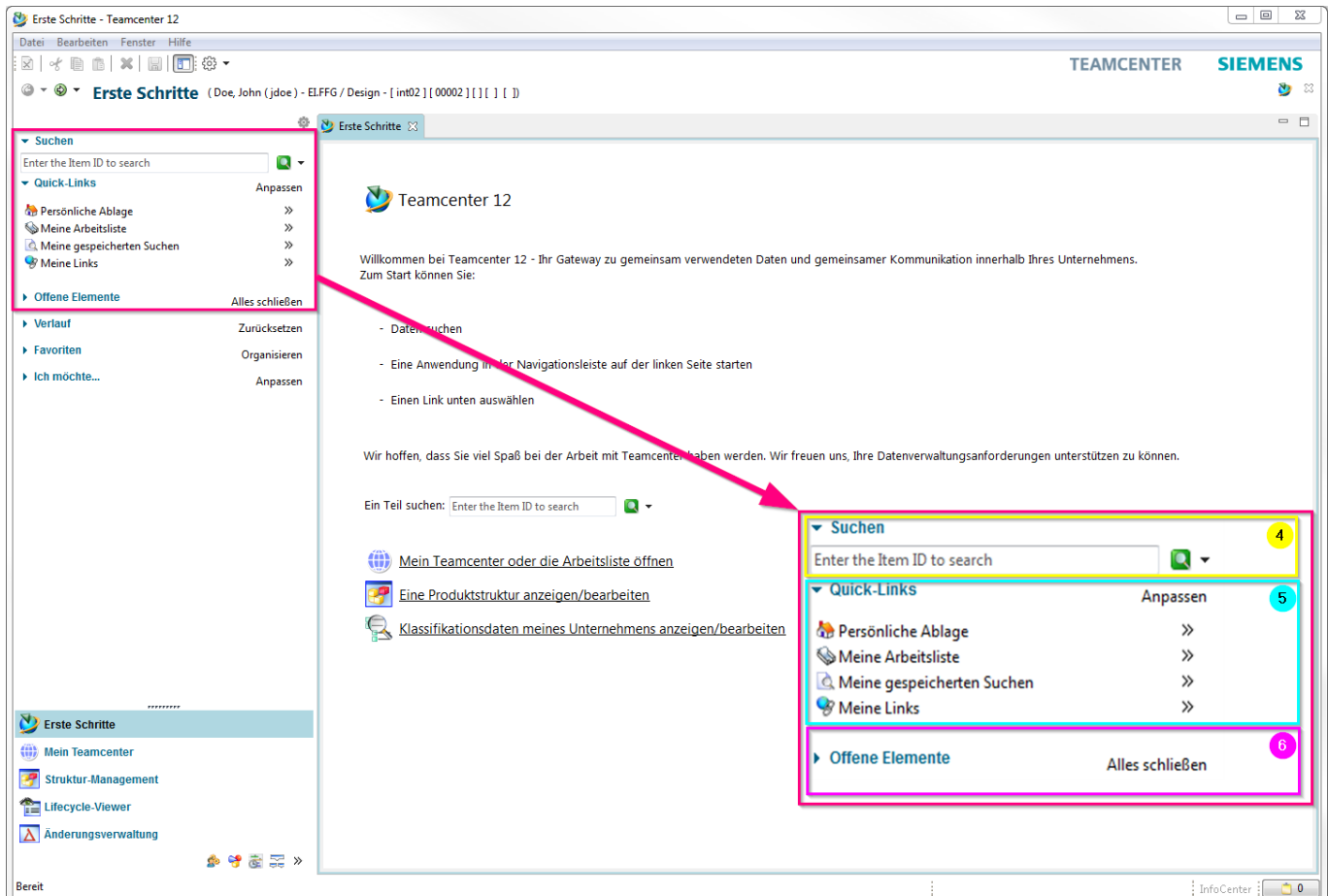
2.2.1 Rich client interface



1. The **Menu- & Tool-Bar** -> Functions of the currently displayed application.

2. The „**Back**“ and „**Forward button**“ allows you to navigate between open Teamcenter applications.

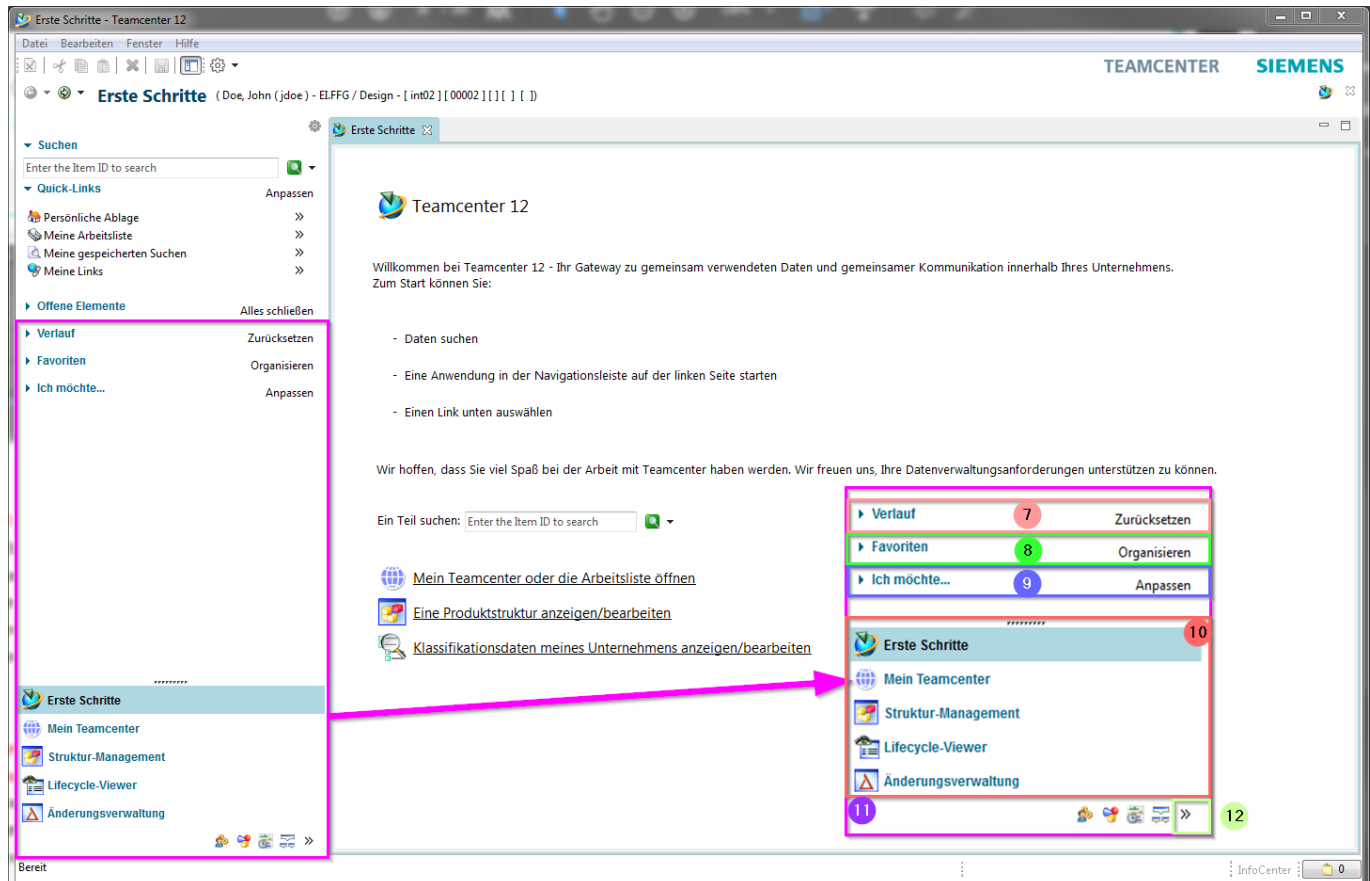
3. The **navigation window** gives you access to frequently used applications.



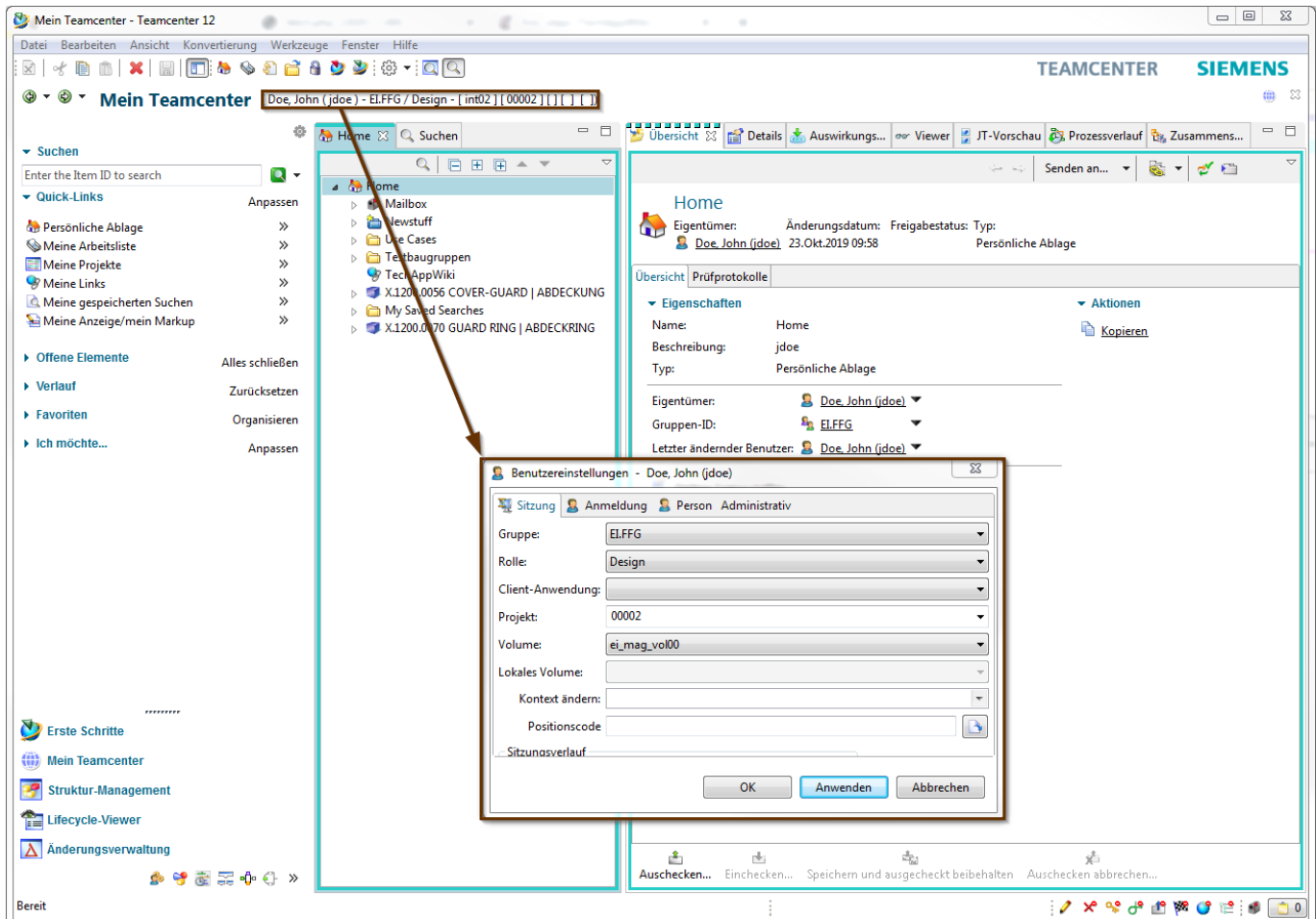
4. color #ed1c24>**Quick Search**</color> („Quick Search“) offers the possibility to search for datasets, item ID, item names, keywords and advanced search options.

5. Via the „**Quick Links**“ you can jump to your personal „Home“ folder, saved searches, favorites and work lists.

6. „**Open elements**“ shows all open objects that are used in the application.



7. The **history** shows the last opened Teamcenter application.
8. in the **„Favorites“** your specially marked „Teamcenter Objects“ are displayed.
9. About **„I want...“** connections to the tools are made available, which are used repeatedly, e.g. to initiate or change processes.
10. The **„Primary Application Button“** opens the most frequently used Teamcenter applications.
11. The **„Secondary Application button“** contains applications that are used less frequently.
12. The **„Configure Application button“** provides access to the tools to configure the display of primary and secondary applications.



13. user settings

group:

Responds to the KV. You can be assigned to several groups, which you can control here. Other number generators are attracted according to the group.

Attention:

\\The SAP transfer is controlled by the assignment of a group!

roll:

If you are assigned to more than one role (*Design-Admin*, *Design*, *Plot*), you can control them using this menu.

Client application:

Here, for example, different NX environments (*NX*, *NX CAM*...) can be controlled.

project:

Corresponds to the EAC group. This must be set to 00002 after the initial login to Teamcenter.

Change context:

Here you can control whether you work in a change context. If you want to work in a change context, all changes and new installations are documented under the change number.